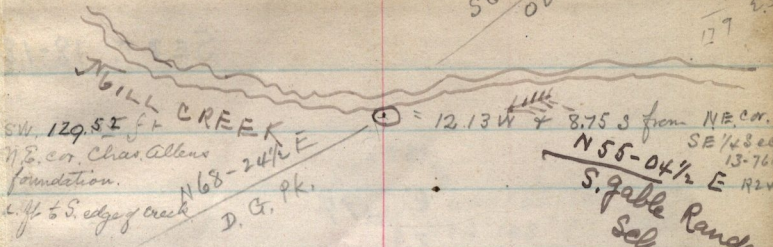


561-20 E
OBS-PK.

172 246
177 10
179 2.56



tree - N.W 46.15 East post in bar
S.W 45.65 cor post
S.E 43.5 post in cor, fence being East.

33-13 E N. Ogden
8. gable meeting house

ST. RUNNING WEST.
SEE BOOK 4 p 71

SANDSTONE

No 79

near
Wm Pirell
Place - NW from
it

N17-42 E
BENLO -
N66-44 E
D-G-PK.

S62-21 1/2 E
OBS-PK. 830 1/2 E
S 20-17 E SE cor
U.S. OBSERVATORY
N16-40 1/2 H D
BENLO
13-76 R2W

LARGE
COTTONWOOD TREE
IN FENCE

MARRIOTT'S
SCHOOL HS.



S65-43 E
OBS-PK.

N61-43 1/2 E
D.G. PK.

SANDSTONE

Jos. Richlin House

1.45 1/2 CH SW. No 78
164 + 27
76
SEE PAGE